



DEFENDER



RDV RAPID DEPLOYMENT VEHICLE

The Rapid Deployment Vehicle (RDV) is a newly developed modular equipment and weapons platform concept based on the powerful Defender XD range. The RDV is a tough but exceptionally mobile addition to the versatile Land Rover family.

Developed jointly with Ricardo Special Vehicles, leading designers of special military vehicle conversions. It will meet the increasingly important peace support and security operations that face the world's Defence forces anywhere - well into the 21st Century.

The RDV can reach a potential flashpoint fast, even in the most rugged terrain and climatic conditions, and is capable of carrying a potent weapons mix - making it a most effective deterrent.

This combination of mobility and potency make it ideal for national Defence roles, multi-national peace support, humanitarian and

refugee protection operations.

The RDV's go-anywhere ability stems from the base vehicle, the Defender XD range, with permanent 4-wheel drive, powered by the 300Td 2.5 litre direct injection, turbo-charged and

intercooled diesel engine specially

developed for the most

demanding operation

requirements, proven

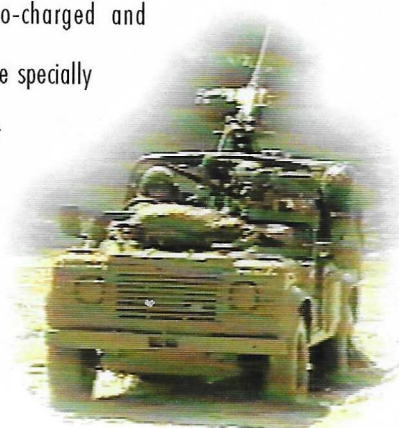
in the most exhaustive

trials ever and selected

to take the British Armed

Forces into the 21st Century. A

version of the RDV is currently under trial for use by the British Forces.



THE RDV - A FORMIDABLE WEAPONS PLATFORM

The RDV offers various modular equipment and ordnance kits to fit the Truck Utility Light and Medium General Service and Fitted For Radio variants of the Defender XD. The simple component kits used singularly or collectively are easily fitted in the field using normal hand tools to adapt the vehicle to meet precise user requirements, only minor modifications are required to the base vehicle allowing it to be returned to the original role.

Superstructure / Weapon Platform

Low profile superstructure developed to allow airportability without dismantling for rapid reaction. The RDV can be transported in aircraft and helicopters such as C130 and CH47. It can also be underslung and is capable of being airdropped.

The superstructure also provides full rollover protection for a 3 man crew. A detachable wire cutter to protect the front crew members is incorporated for use when the windscreen is removed.



Crew protection weapon post provides a means of attachment of 7.62 GPMG for operation by co-driver.

Personal weapon stowage points for individual crew members are incorporated.

Single hoop rollover protection provides 3 man crew protection and also allows for use of a rear weapon pedestal mount on Defender XD 90.

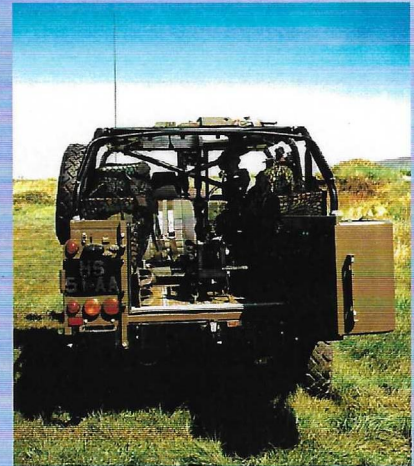


RICARDO

Stowage and Seating

Versatile and flexible netting stowage system for crew equipment. Individual stowage facilities are provided for fuel and water jerricans, ammunition, weapons and ancillaries.

Rear facing seat with full harness safety belt and head restraint is provided.



The hinged rear pannier provides additional stowage space (sufficient for spare wheel).

A camouflage net rack, mounted on the bonnet, provides stowage for the net and poles.



Alternative weapon mount and stowage system fitted to Defender XD 90 vehicle to meet specific customer requirement.

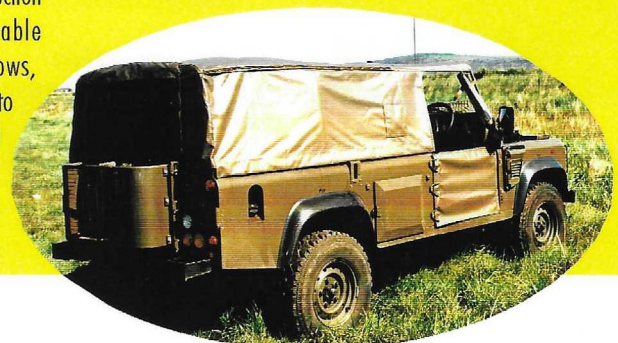


A top hamper plate provides a means of attachment for a 900 dia. turret ring and weapon mounting system, allowing use of 7,62 GPMG, 0.5HMG, M19 40mm grenade launcher and Giat 20mm Cannon.



Canopy

Versatile weather protection canopy with removable doors and windows, allowing easy access to turret ring mounted weapon.



DEFENDER XD	90	110
BODY TYPE		
Soft Top	■	■
Hard Top	○	○
Fitted For Radio	○	○
BODY SPECIFICATION		
Spare wheel bodyside mounting	■	■
Spare wheel bonnet mounting	○	○
Pioneer stowage	■	■
Jerrycan stowage	-	■
ENGINES		
4 cylinder 2.5 litre diesel turbo direct injected delivering 83 Kw @ 4000 rpm and 265Nm @ 1800 rpm	■	■
TRANSMISSION		
5 forward & 1 reverse fully synchronised manual gearbox	■	■
2 speed transfer gearbox with a lockable centre differential	■	■
SUSPENSION		
Coil springs with heavy duty telescopic dampers	■	■
Heavy duty axles with 2 pin differentials front and rear	■	-
Heavy duty axles with 2 pin differentials in the front and 4 pin differential in the rear	-	■
FULL CAPACITY		
Rear tank (litres)	-	82
Side tank (litres)	55	-
DIMENSIONS		
Length (mm)	3824	4544
Width - Over mirrors (mm)	2110	2110
Width - Over body - Eyebrows (mm)	1785	1785
Maximum height (mm)	2090	2150
Track - front and rear (mm)	1521	1521
Cargo bed length - integrated body (mm)	1144	1855
Interior width (mm)	1458	1458
ELECTRICAL SYSTEMS		
24 volt - 1.2 Kw system	■	■
Full military radio suppression to DEF - Stan 59-41 Class B	■	■
24 volt - 2.4 Kw system - Fitted For Radio (FFR)	○	○
Full military radio suppression to DEF - Stan 59-41 Class A	○	○
MOBILITY		
Approach angle (laden weight)	47°	49°
Departure angle (laden weight)	43°	30°
Ramp breakover angle	141°	152°
Minimum ground clearance (mm)	240	228
Wading depth (mm)	600	600
Maximum gradient	45°	40°
Turning Circle - kerb to kerb (m)	11.1	13.6
WEIGHTS		
Gross vehicle weight (Kg)	2600	3350
Front axle weight (maximum Kg)	1200	1300
Rear axle weight (maximum Kg)	1500	2100
BRAKES		
Ventilated front discs - self adjusting	■	■
Solid rear discs - self adjusting	■	■
TYRES		
	7.50 x 16	7.50 x 16

Standard ■
Optional ○
Not Applicable -

ENQUIRES TO:



GOVERNMENT AND MILITARY OPERATIONS

International House,
Bickenhill Lane,
Birmingham B37 7HQ
Direct Line 0121-781 6590
Direct Fax 0121-781 6460



Ricardo Special Vehicles Ltd

Shoreham Airport
Shoreham-by-Sea
West Sussex BN43 5FF UK
Tel +44 (0)1273 441445
Fax +44 (0)1273 441446